





TABLE OF CONTENTS

WORDS FROM THE BOSS	6-7
.....	
COLOR STORIES & FITS	8-13
.....	
BEAVER CLUB - ATHLETES PROFILES - TOILE DE JOUY	14-25
.....	
MENS OUTERWEAR	26-37
.....	
MENS STREETWEAR	38-51
.....	
WOMENS OUTERWEAR	52-61
.....	
WOMENS STREETWEAR	62-69
.....	
ACCESSORIES	70-75
.....	
REP LIST - CONTACT & INFO	76-79
.....	







A WORD FROM THE BOSS

SIMON CHAMBERLAIN

WHEN MY BROTHERS AND I STARTED NOMIS IN 2000, IT WAS WITH THE HOPE THAT A FEW LOCAL SNOWBOARDERS WOULD WANT TO WEAR OUR T SHIRTS. WE NEVER THOUGHT THAT PIECES LIKE THE OG PLAID AND THE TALL T'S WOULD RESONATE WITH SO MANY PEOPLE ACROSS THE GLOBE. IT IS ALWAYS HUMBLING TO LOOK BACK TO SEE HOW FAR NOMIS HAS COME.

NOW BEING BACK AS A SHAREHOLDER OF THE COMPANY, I'M MORE INVOLVED THAN EVER AND I AM EXCITED TO SAY THE FUTURE OF NOMIS IS LOOKING BRIGHT. WE HAVE NEW DESIGNS, NEW CONCEPTS AND NEW VISIONS FOR 2014/2015. I HOPE YOU ENJOY THEM AS MUCH AS I DO.

STAY BOSSIN'

NMS COLOR STORIES



BLACK



WHITE



NAVY

19-4028TPX



ROYAL

19-4050TPX



BLUFOG

18-3916TPX



STORM

16-4703TPX



FIRE

18-1763TPX



BURNT

18-1355TPX



MERLOT

19-1725TPX



GOLDEN

15-1050TPX



KHAKI

15-1114TPX



SURPLUS

18-0316TPX



EVERGREEN

19-6050TPX

ACCENT



WINTERGREEN

16-5533TPX



SCUBA

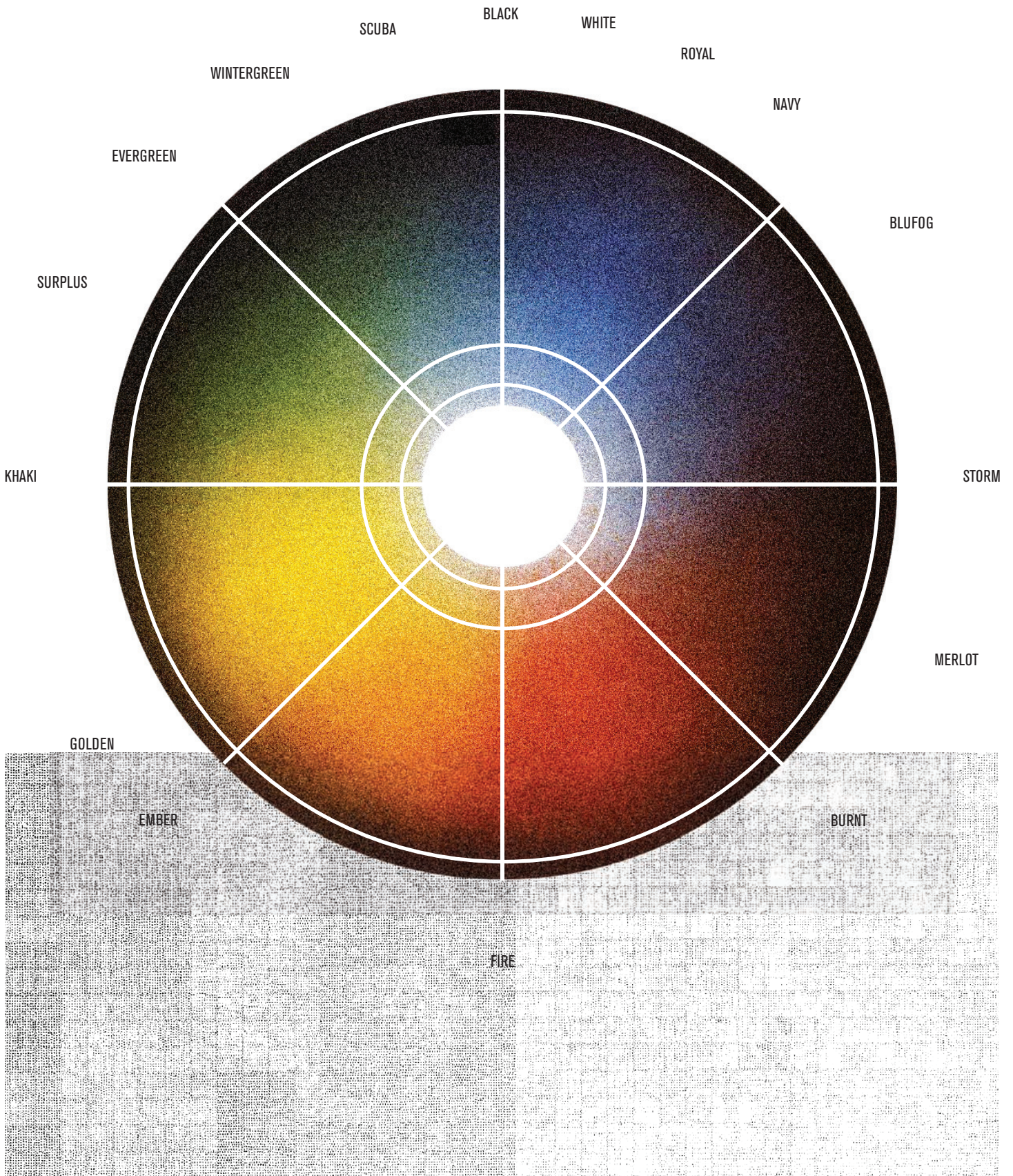
16-4843TPX



EMBER

16-1255TPX

NMS COLORWHEEL





THE SLIM FIT

STREET INSPIRED ADJUSTED FIT



THE RELAX FIT

OUR CLASSIC NOMIS FIT



THE TALL FIT

THE LONGER THE BETTER



MENS SIZE & FIT

SIZE CHART

	S	M	L
CHEST	36-38"	38-40"	40-42"
WAIST	30-32"	32-34"	34-36"
PANT INSEAM	32.5"	32.5"	34.5"

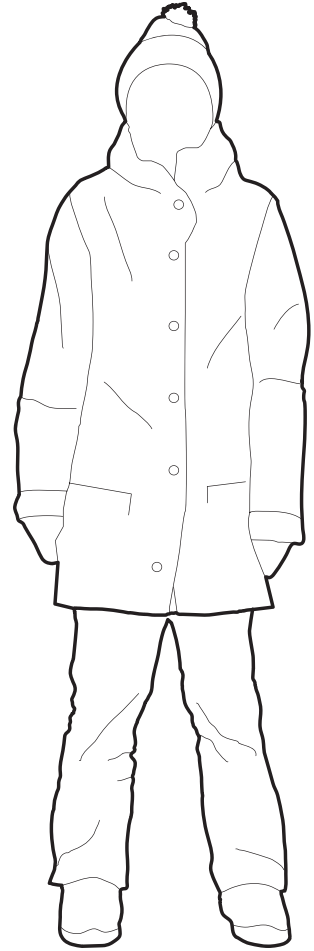
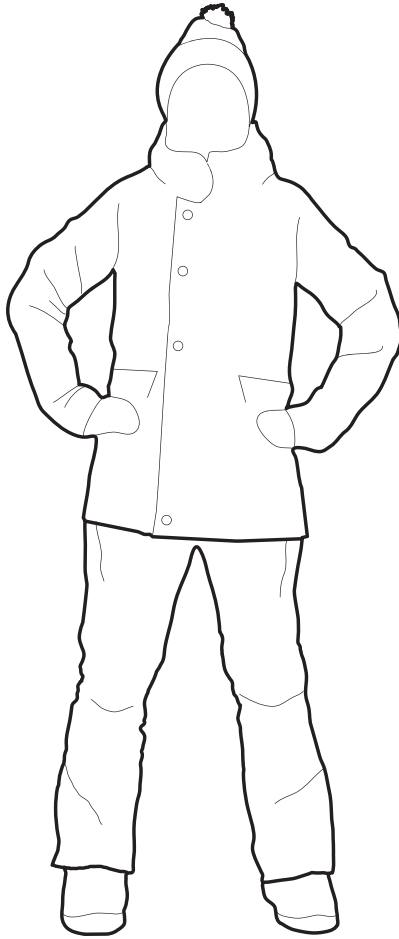
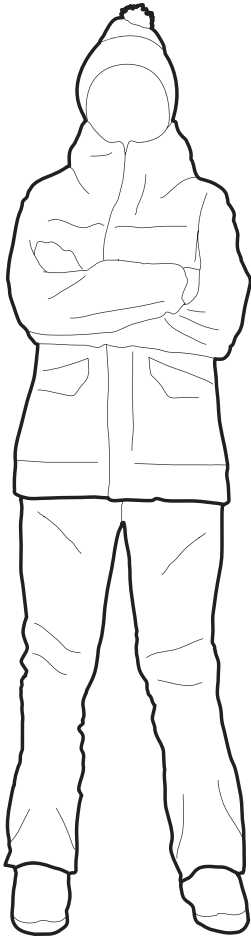
	LT	XL	XLT
CHEST	40-42"	42-44"	42-44"
WAIST	34-36"	36-38"	36-38"
PANT INSEAM	NA	34.5"	NA

HOW TO MEASURE

CHEST: MEASURE UNDER YOUR ARMS, AROUND THE FULLEST PART OF YOUR CHEST

WAIST: BEND TO THE SIDE AND MEASURE AROUND THE PLACE YOUR WAIST BENDS, KEEPING THE TAPE A BIT LOOSE

PANT INSEAM: MEASURE FROM THE CROTCH TO THE FLOOR WITH NO SHOES



THE SLIM FIT

STREET INSPIRED ADJUSTED FIT



THE RELAX FIT

OUR CLASSIC NOMIS FIT



THE TALL FIT

THE LONGER THE BETTER



WOMENS SIZE & FIT

SIZE CHART

	XS	S	M
CHEST	30-31"	32-33"	34-35"
WAIST	23-24"	25-26"	27-28"
HIP	32-34"	34-36"	36-38"
PANT INSEAM	32.5"	32.5"	32.5"

	L	XL
CHEST	35-36"	37-38"
WAIST	29-30"	31-32"
HIP	38-40"	40-42"
PANT INSEAM	32.5"	32.5"

HOW TO MEASURE

CHEST: MEASURE UNDER YOUR ARMS, AROUND THE FULLEST PART OF YOUR CHEST

WAIST: BEND TO THE SIDE AND MEASURE AROUND THE PLACE YOUR WAIST BENDS, KEEPING THE TAPE A BIT LOOSE

PANT INSEAM: MEASURE FROM THE CROTCH TO THE FLOOR WITH NO SHOES

THE BEAVER CLUB

THE BEAVER CLUB WAS A GENTLEMAN'S DINING CLUB FOUNDED IN 1785 BY THE MOSTLY ENGLISH SPEAKING SNOWBOARDER 'BARONS' OF MONTREAL. ACCORDING TO THE CLUB'S RULES, THE OBJECT OF THEIR MEETING WAS TO BRING TOGETHER, AT STATED PERIODS DURING THE WINTER SEASON, A SET OF MEN HIGHLY RESPECTABLE IN SNOWBOARDING AND SOCIETY, WHO HAD PASSED THEIR BEST DAYS IN A SAVAGE COUNTRY AND HAD ENCOUNTERED THE DIFFICULTIES AND DANGERS INCIDENT TO A PURSUIT OF A SNOWBOARDING CAREER.

ONLY FRAGMENTARY RECORDS REMAIN OF THEIR MEETINGS, BUT FROM THESE IT IS CLEAR THAT THE BEAVER CLUB WAS A SNOWBOARD CREW FROM THE NORTH WEST.

THE MEN OF THE BEAVER CLUB WERE THE PREDECESSORS OF MONTREAL'S SQUARE MILERS.







SIMON CHAM BERLAIN

ATHLETE STATS

HOMETOWN: VANCOUVER BC
RESORT: MOUNT SEYMOUR
SPONSORS: NOMIS, STEPCHILD, THIRTYTWO/ETNIES, DROP, GIRO, BEAVER WAX



BLAIR MC KINNEY

ATHLETE STATS

HOMETOWN: WYEVALE, ON
RESORT: MOUNT SEYMOUR
SPONSORS: NOMIS, K2, VANS, SKULLCANDY, VONZIPPER, DROP.MT.SEYMOUR AND COCO'S-PURE

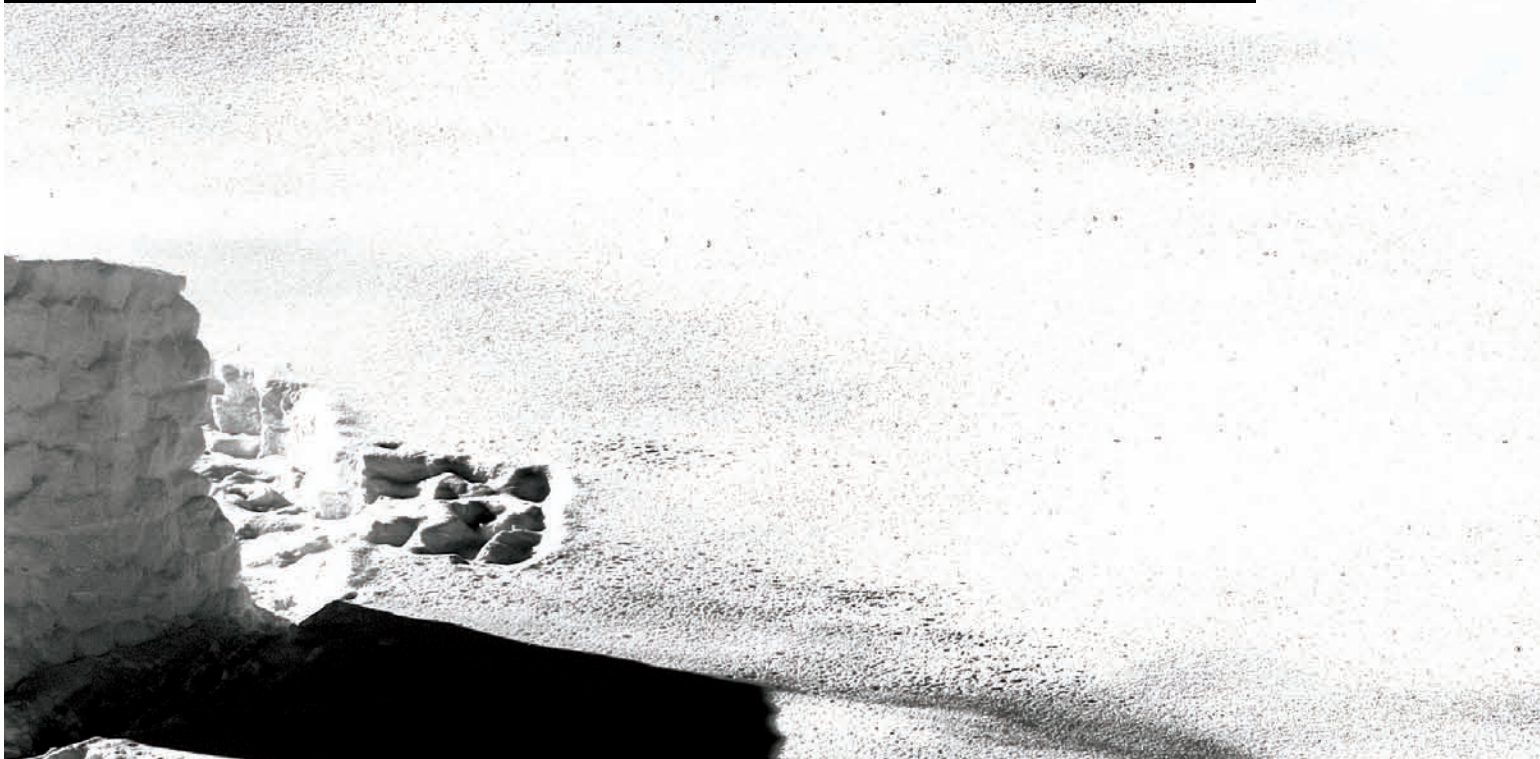




JORDAN PHIL LIPPS

ATHLETE STATS

HOMETOWN: CALGARY AB
RESORT: WHISTLER AND LAKE LOUISE
SPONSORS: ROME SDS. VANS. DYE OPTICS. CELTEK. MYPAKAGE. STANCE. THE SOURCE.





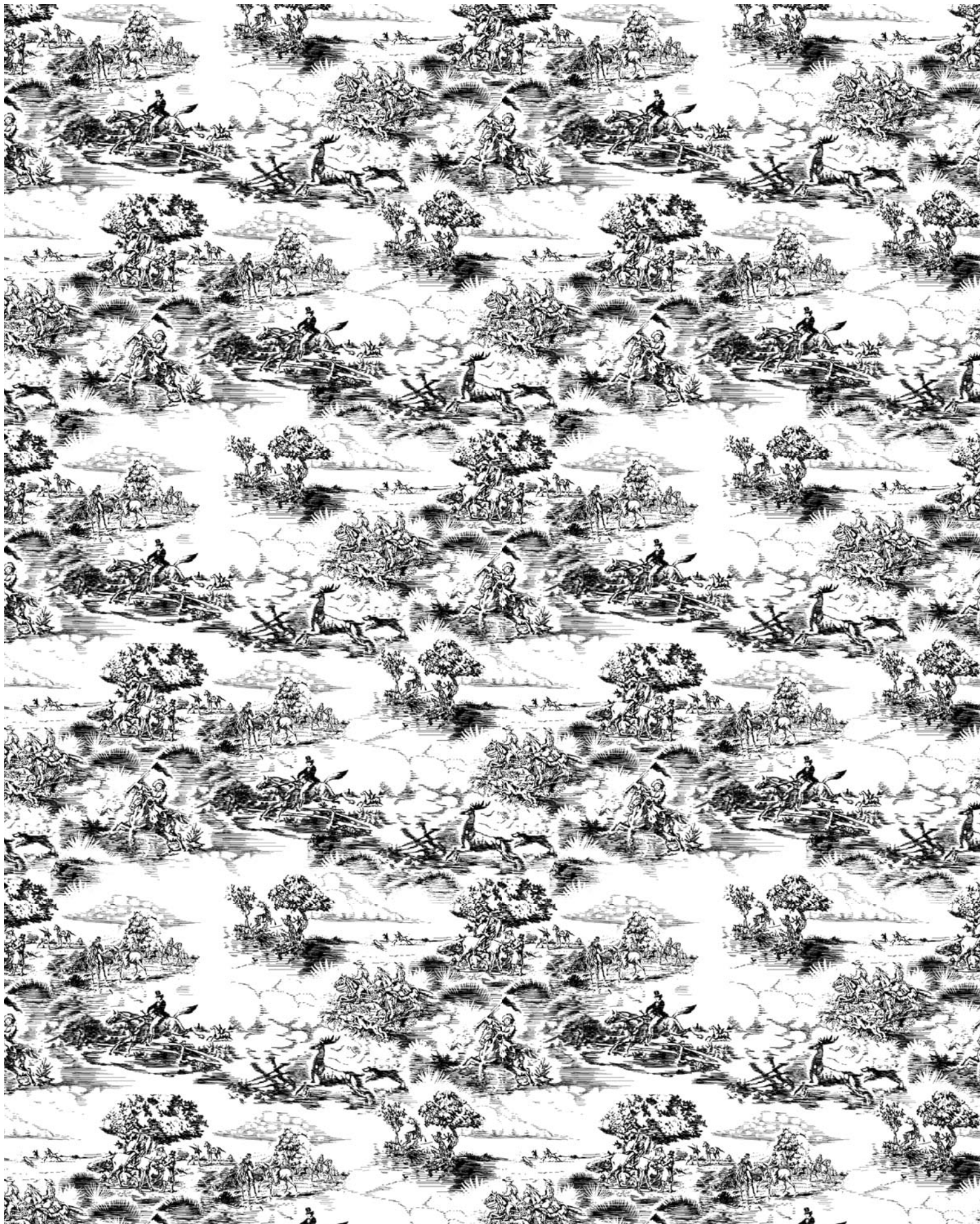
TRINT THO MAS

ATHLETE STATS

HOMETOWN: SASKATOON, SASKATCHEWAN
RESORT: GROUSE MOUNTAIN
SPONSORS: NOMIS, ENDEAVOR SNOWBOARDS, OSIRIS, SKULLCANDY, ARNETTE, AIRHOLE









TOILE DE JOUY

ORIGIN & HISTORY

TOILE DE JOUY IS A TYPE OF DECORATING PATTERN CONSISTING OF A WHITE OR OFF-WHITE BACKGROUND ON WHICH A REPEATED PATTERN DEPICTING A FAIRLY COMPLEX SCENE, GENERALLY OF A PASTORAL THEME OR AN ARRANGEMENT OF FLOWERS. THE PATTERN PORTION CONSISTS OF A SINGLE COLOR, MOST OFTEN BLACK, DARK RED, OR BLUE. GREENS, BROWNS, AND MAGENTA TOILE PATTERNS ARE LESS COMMON, BUT NOT UNHEARD OF. TOILE IS MOST ASSOCIATED WITH FABRICS (CURTAINS AND UPHOLSTERY IN PARTICULAR, ESPECIALLY CHINTZ), THOUGH TOILE WALLPAPER IS ALSO POPULAR. TOILE CAN ALSO BE USED ON TEAPOTS, BEDDING, CLOTHING, ETC. IN UPPER-CLASS (PRIMARILY AMERICAN, BUT ALSO NORTHERN EUROPEAN) SOCIETY, TOILE IS OFTEN SEEN ON DRESSES OR APRONS USED AT SUCH EVENTS AS COUNTRY-THEMED GARDEN PARTIES OR TEA PARTIES.

TOILES WERE ORIGINALLY PRODUCED IN IRELAND IN THE MID-18TH CENTURY AND QUICKLY BECAME POPULAR IN BRITAIN AND FRANCE. THE TERM, TOILE DE JOUY, ORIGINATED IN FRANCE IN THE LATE 18TH CENTURY. IN THE FRENCH LANGUAGE, THE PHRASE LITERALLY MEANS CLOTH FROM "JOUY-EN-JOSAS" A TOWN OF NORTH-CENTRAL FRANCE. TOILES WERE VERY POPULAR DURING THE COLONIAL ERA IN THE UNITED STATES AND ARE HIGHLY ASSOCIATED WITH PRESERVATIONIST TOWNS AND HISTORICAL AREAS SUCH AS COLONIAL WILLIAMSBURG.

ABOUT THE ARTIST

TIM BARNARD

TIM BARNARD SPENT MOST OF HIS YOUTH IN WESTERN NORTH AMERICA ABSORBING THE FRONTIER LIFESTYLE AND DEVELOPING A HARD EDGE BLACK AND WHITE STYLE THAT SPEAKS OF CONTEMPORARY ART, HISTORICAL MURALISM, PSYCHEDELIC COMICS AND OLD SCHOOL SKATEBOARD GRAPHICS. HE WORKED IN THE TATTOO AND MULTI-MEDIA INDUSTRIES BRIEFLY BEFORE RECEIVING A BFA IN DRAWING AT ACAD AND YALE. HE LIVED AND WORKED IN THE YUKON, MEXICO, CALGARY, MONTREAL, AND NEW YORK OVER THE LAST DECADE ESTABLISHING HIMSELF PROFESSIONALLY AS AN ILLUSTRATOR, MURALIST, AND FINE ARTIST. CURRENTLY TIM AND HIS WIFE AND PARTNER WORK INTERNATIONALLY AND ARE BASED IN VANCOUVER, BC.

Tim J. Barnard

14

-

15





EST 1967 2000

**MENS
OUTERWEAR**

FALL - WINTER

N54102001

CHAMBERLAIN

MENS JACKET



FEATURES:

- MEDIA POCKET
- GOGGLE POCKET
- PASS POCKET SLEEVE
- FIXED SNOW SKIRT
- VENTING
- CUSTOM TRIM & DETAILING INSIDE OUT
- FULL SEAM SEALING

FABRIC & INSULATION:

15K / 10K

- DWR+15K/10K LAMINATE
- 100% POLYESTER MELANGE
- SHELL

COLORWAYS:



• CAMO



• BLACK

SIZE: ST • MT • LT • XLT



SL

N54102002

TIMELAPSE

MENS JACKET



FEATURES:

- MEDIA POCKET
- GOGGLE POCKET
- VENTING
- CRITICAL SEAM SEALING
- VENTING
- CUSTOM TRIM & DETAILING INSIDE OUT
- FULL SEAM SEALING

FABRIC & INSULATION:

10K / 10K

- DWR+10K/10K COATING - WR+10K/10K LAMINATE
- 100% POLYESTER MELANGE / HERRINGBONE
- 60/40 GMS BODY/SLEEVE

COLORWAYS:



• BURNT



• CAMO

SIZE: S • M • L • XL



N54102003

ATHLETICS

MENS JACKET



FEATURES:

- MEDIA POCKET
- GOGGLE POCKET
- PASS POCKET SLEEVE
- FIXED SNOW SKIRT
- VENTING
- CUSTOM TRIM & DETAILING INSIDE OUT
- FULL SEAM SEALING

FABRIC & INSULATION:

10K / 10K

- WR+10K/10K COATING
- 100% POLYESTER DOBBY
- 60/40 GMS BODY/SLEEVE

COLORWAYS:



• EVERGREEN



• KHAKI



• ROYAL

SIZE: S • M • L • XL



N54102004

COMMAND

MENS JACKET



FEATURES:

- MEDIA POCKET
- GOGGLE POCKET
- VENTING
- CRITICAL SEAM SEALING
- FIXED SNOW SKIRT
- CUSTOM TRIM & DETAILING INSIDE OUT
- FULL SEAM SEALING

FABRIC & INSULATION:

10K / 10K

- WR+10K/10K LAMINATE
- 100% POLYESTER MELANGE
- 60/40 GMS BODY/SLEEVE

COLORWAYS:



• BLACK



• BURNT

SIZE: S • M • L • XL



N54102005 POWPOW MENS JACKET



FEATURES:

- MEDIA POCKET
- GOGGLE POCKET
- PASS POCKET SLEEVE
- FIXED SNOW SKIRT
- VENTING
- WRIST GAITERS
- CRITICAL SEAM SEALING

FABRIC & INSULATION:

10K / 10K

- DWR+10K/10K COATING
- 100% POLYESTER / NYLON / HERRINGBONE
- 60/40 GMS BODY/SLEEVE

COLORWAYS:

SIZE: ST • MT • LT • XLT



• EVERGREEN



• BLACK



N54102007 ANORAKS MENS JACKET



FEATURES:

- MEDIA POCKET
- GOGGLE POCKET
- VENTING

FABRIC & INSULATION:

10K / 10K

- DWR+10K/10K COATING
- HERRINGBONE
- NON-INSULATED SHELL

COLORWAYS:

SIZE: S • M • L • XL



• TOILE DE JOUY



• AZTEC



• BLACK



N54102008

BROKENDOWN

MENS JACKET



FEATURES:

- MEDIA POCKET
- GOGGLE POCKET
- VENTING

FABRIC & INSULATION:

10K / 10K

- WR+10K/10K COATING
- 100% POLYESTER DOBBY
- NON-INSULATED SHELL

COLORWAYS:

SIZE: ST • MT • LT • XLT



• KHAKI



• BLACK



• FIRE



N54102011

HALF BAKED

MENS JACKET



FEATURES:

- MEDIA POCKET
- GOGGLE POCKET
- VENTING

FABRIC & INSULATION:

10K / 10K

- WR+10K/10K COATING
- 100% NYLON DOBBY
- 60/40 GMS BODY/SLEEVE

COLORWAYS:

SIZE: ST • MT • LT • XLT



• BLACK



• FIRE



• BURNT



N54102012

VARSITY

MENS JACKET



FEATURES:

- MEDIA POCKET
- GOGGLE POCKET
- FULL SEAM TAPING
- LEATHER EMBELLISHMENT

FABRIC & INSULATION:

8K / 8K

- DWR+10K/10K COATING
- 100% POLYESTER / HERRINGBONE
- SHELL

COLORWAYS:



• AZTEC



• BURNT

SIZE: S • M • L • XL



N54102013

JEAN JACKET

MENS JACKET

STEPCHILD COLAB



FEATURES:

- MEDIA POCKET
- GOGGLE POCKET
- VENTING
- CRITICAL SEAM SEALING

FABRIC & INSULATION:

15K / 10K

10K / 10K

- WR+10K/10K LAMINATE DENIM OR DWR+15K/10K LAM.
- 100% POLYESTER MELANGE / DENIM TWILL
- NON-INSULATED SHELL

COLORWAYS:



• NAVY



• CAMO

SIZE: S • M • L • XL

STEPCHILD



N54102016M
HONCHO
 UNISEX PONCHO



FEATURES:

FABRIC & INSULATION:

- BIG WEAVE PONCHO PATTERN

COLORWAYS:

SIZE: S • M • L • XL



• MULTI



N54102018
DEEP
 MENS VEST



FEATURES:

FABRIC & INSULATION:

- 100% POLYESTER
- 60GMS

COLORWAYS:

SIZE: S • M • L • XL



• BLACK



• MERLOT



N54102019

TWIN

MENS JACKET



FEATURES:

- INTERIOR POCKET
- BONDED FLEECE HOOD & SLEEVES

FABRIC & INSULATION:

- DWR
- NON-INSULATED

COLORWAYS:

SIZE: S • M • L • XL



• FIRE



• BLACK



N54102020

FLIPIT

MENS JACKET



FEATURES:

- REVERSIBLE

FABRIC & INSULATION:

5K / 5K

- WR+5K/5K COATING
- 100% POLYESTER TAFFETA
- NON-INSULATED SHELL

COLORWAYS:

SIZE: S • M • L • XL



• CAMO



• FIRE



• BLACK



N54102025

PACKABLE

MENS JACKET



FEATURES:

- MEDIA POCKET
- VENTING
- MESH LINING

FABRIC & INSULATION:

5K / 5K

- WR+5K/5K COATING
- 100% POLYESTER TAFFETA
- NON-INSULATED SHELL

COLORWAYS:



• MERLOT



• BLACK



• ROYAL

SIZE: S • M • L • XL



N54102019M

BEACON

UNISEX PONCHO



FEATURES:

FABRIC & INSULATION:

- BIG WEAVE PONCHO PATTERN

COLORWAYS:

SIZE: S • M • L • XL



• MULTI



N54109001

SIMON

MENS PANTS



FEATURES:

- MEDIA POCKET
- HANDWARMER POCKETS
- BOOT GAITERS
- VENTING
- FULL SEAM SEALING

FABRIC & INSULATION:

15K / 10K

- DWR+15K/10K LAMINATE
- 100% POLYESTER MELANGE WAXED FABRIC (BLACK)
- NON-INSULATED SHELL

COLORWAYS:



• CAMO



• BLACK

SIZE: S • M • L • XL



N54109002

CARGO

MENS PANTS



FEATURES:

- MEDIA POCKET
- HANDWARMER POCKETS
- BOOT GAITERS
- VENTING
- CRITICAL SEAM SEALING

FABRIC & INSULATION:

10K / 10K

- WR+10K/10K COATING / 10K/10K LAMINATED DENIM TWILL
- 100% POLYESTER DOBBY
- 40 GMS COMPACTED

COLORWAYS:



• EVERGREEN



• NAVY



• BLACK

SIZE: S • M • L • XL



N54109003

5 POCKET

MENS PANTS



FEATURES:

- MEDIA POCKET
- HANDWARMER POCKETS
- BOOT GAITERS
- VENTING
- CRITICAL SEAM SEALING

FABRIC & INSULATION:

10K / 10K

- WR+10K/10K LAMINATE
- 100% POLYESTER MELANGE
- SHELL

COLORWAYS:

SIZE: S • M • L • XL



• BLACK



• KHAKI



• BURNT



N54109004

CHINO

MENS PANTS



FEATURES:

- MEDIA POCKET
- HANDWARMER POCKETS
- BOOT GAITERS
- VENTING
- CRITICAL SEAM SEALING

FABRIC & INSULATION:

10K / 10K

- WR+10K/10K COATING
- 100% POLYESTER DOBBY
- 40GMS COMPACTED

COLORWAYS:

SIZE: S • M • L • XL



• BLUFOG



• GOLDEN



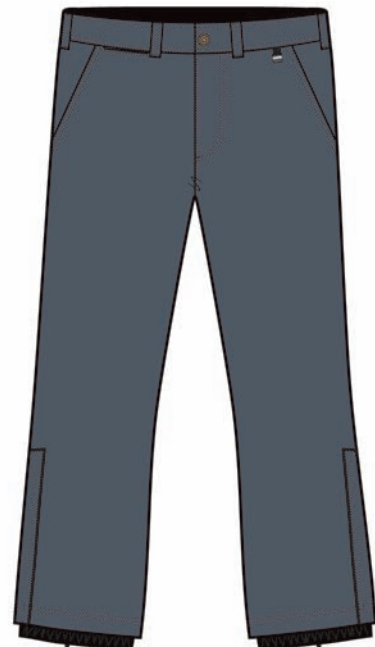
• KHAKI



• BLACK



• ROYAL



14

-

15



EST 2000

**MENS
STREETWEAR**

FALL - WINTER

HUNTERS SHIRT



N34118000
LABEL
MENS T-SHIRT



FABRIC:

• 100% COMBED COTTON 160GSM JERSEY
AND/OR 98/2 COTTON/POLY 160GSM JERSEY

COLORWAYS:

SIZE: ST • MT • LT • XLT



• BLACK



• WHITE



• SURPLUS



N34118001
BEAVER
MENS T-SHIRT



FABRIC:

• 100% COMBED COTTON 160GSM JERSEY
AND/OR 85/15 COTTON/POLY 160GSM JERSEY

COLORWAYS:

SIZE: ST • MT • LT • XLT



• STORM



• BLACK



• EVERGREEN



• WHITE



N34118002
ICON
MENS T-SHIRT



FABRIC:

- 100% COMBED COTTON
- 160GSM JERSEY

COLORWAYS:

SIZE: ST • MT • LT • XLT



• FIRE



• BLACK



• ROYAL



• WHITE



N34118003
STEEP & DEEP TEE
MENS T-SHIRT



FABRIC:

- 100% COTTON/POLY
- 160 GSM JERSEY

COLORWAYS:

SIZE: ST • MT • LT • XLT



• ROYAL



• BLACK



• MERLOT



N34118004

ALL OVER

MENS T-SHIRT



FABRIC:

- 100% COMBED COTTON
- 160 GSM JERSEY

COLORWAYS:

SIZE: ST • MT • LT • XLT



• WHITE



• NAVY



N34118009

EVER-AMAZING

MENS T-SHIRT



FABRIC:

- 100% COMBED COTTON
- 160 GSM JERSEY

COLORWAYS:

SIZE: ST • MT • LT • XLT



• ROYAL



• WHITE



• FIRE





N34119000

ELBOW

MENS LONG SLEEVE SHIRT



FABRIC:

• 100% COMBED COTTON 160 GSM JERSEY

COLORWAYS:

SIZE: ST • MT • LT • XLT



• SURPLUS



• BLACK



• FIRE



N34119001

ICON LS

MENS LONG SLEEVE SHIRT



FABRIC:

• 100% COMBED COTTON
AND/OR 85/15 COTTON/POLY 160GSM JERSEY

COLORWAYS:

SIZE: ST • MT • LT • XLT



• ROYAL



• MERLOT



• BLACK



N34110008

HENLEY ZIP

MENS HOODY



FABRIC:

- 100% COTTON/POLY
- 400 GSM JERSEY

COLORWAYS:

SIZE: S • M • L • XL



• MERLOT



• BLACK



• ROYAL



N34110009

CHAMBERLAIN WARMUP

MENS ZIP HOODY



FABRIC:

- 100% COTTON/POLY
- 400 GSM JERSEY
- FLEECE

COLORWAYS:

SIZE: S • M • L • XL



• EVERGREEN



• BLACK



• FIRE



N34110001

BASIC CREW

MENS CREW



FABRIC:

- 80/20 COTTON/POLY 400GSM FRENCH TERRY
- 100% POLY TAFFETA

COLORWAYS:

SIZE: S • M • L • XL



• BLACK



• SURPLUS



• BURNT



N34110007

BASIC ZIP

MENS ZIP HOODY



FABRIC:

- 80/20 COTTON/POLY
- 400 GSM FRENCH TERRY

COLORWAYS:

SIZE: S • M • L • XL



• STORM



• BLACK



• BURNT



N34109020
JUG
MENS JOGGING PANTS



FABRIC:

- 80/20 COTTON/POLY
- 400 GSM FRENCH TERRY

COLORWAYS:

SIZE: S • M • L • XL



• BLACK



• SURPLUS



• BURNT



N34110000
STEEP & DEEP
MENS CREW



FABRIC:

- 100% COTTON/POLY
- 400 GSM FLEECE

COLORWAYS:

SIZE: ST • MT • LT • XLT



• ROYAL



• BLUFOG



• MERLOT



N34110003

G-BEAVER

MENS CREW



FABRIC:

- 80/20 COTTON/POLY 400 GSM FRENCH TERRY
- FLEECE WAISTBAND & CUFFS
- PAINTED TAFFETA

COLORWAYS:



• STORM



• BLACK

SIZE: S • M • L • XL



N34110002

CREW

MENS CREW



FABRIC:

- 100% COTTON/POLY
- 400 GSM FLEECE

COLORWAYS:



• FIRE



• BLUFOG



• BLACK



• MERLOT



• EVERGREEN

SIZE: ST • MT • LT • XLT



N34110006 ICON PULL MENS PULLOVER HOODY



FABRIC:

- 80/20 COTTON/POLY
- 400 GSM FRENCH TERRY

COLORWAYS:

SIZE: ST • MT • LT • XLT



• SURPLUS



• BLACK



• BURNT



N34104000 HUNTERS MENS SHIRT



FABRIC:

- 100% COTTON CHAMBRAY

COLORWAYS:

SIZE: S • M • L • XL



• NAVY



• CAMO



N34102023
CITY
MENS STREET JACKET



FABRIC:

- 100% POLY TWILL
- 100% POLY DOBBY LINING

COLORWAYS:



• CAMO



• NAVY

SIZE: S • M • L • XL



N34104001
TOP POCKET
MENS SHIRT



FABRIC:

- 100% COTTON CANVAS

COLORWAYS:



• BLACK



• BURNT

SIZE: S • M • L • XL



N34104002
BRUSHED
MENS SHIRT



FABRIC:

• 100% COTTON FLANNEL

COLORWAYS:



• FIRE



• BLACK

SIZE: S • M • L • XL



14

-

15





EST 2000



WOMENS
OUTERWEAR

FALL - WINTER

N54402001

PEACOAT

WOMENS JACKET



FEATURES:

- MEDIA & GOGGLE POCKETS
- PASS POCKET SLEEVE
- FIXED SNOW SKIRT
- SHERPA & TAFFETA LINING
- VENTING
- WRIST GAITERS
- FULL SEAM SEALING

FABRIC & INSULATION:

10K / 10K

- 10K/10K CLEAR LAMINATION - DWR+10K/10K COATING
- DENIM TWILL 100% POLYESTER - HERRINGBONE
- POLYFILL 60/40

COLORWAYS:

SIZE: ST • MT • LT • XLT



• SPACE DYE



• BLACK



N54402002

MARSHMELLOW

WOMENS JACKET



FEATURES:

- MEDIA POCKET
- GOGGLE POCKET
- PASS POCKET SLEEVE
- CRITICAL SEAM SEALING
- VENTING

FABRIC & INSULATION:

10K / 10K

- 10K/10K CLEAR LAMINATION
- 100% POLYESTER
- POLYFILL 60/40

COLORWAYS:

SIZE: ST • MT • LT • XLT



• BURNT



• BLACK



N54402003

ELEVATION

WOMENS JACKET



FEATURES:

- MEDIA & GOGGLE POCKETS
- PASS POCKET SLEEVE
- FIXED SNOW SKIRT
- VENTING
- SHERPA & TAFFETA LINING
- CUSTOM TRIM & DETAILING INSIDE OUT
- FULL SEAM SEALING

FABRIC & INSULATION:

15K / 10K

- DWR+15K/10K DOT LAMINATION + PRINT
- 100% POLYESTER MELANGE
- POLYFILL 60/40

COLORWAYS:



• CAMO



• BLACK

SIZE: ST • MT • LT • XLT



N54402005

SALT

WOMENS JACKET



FEATURES:

- MEDIA POCKET
- GOGGLE POCKET
- PASS POCKET SLEEVE
- FIXED SNOW SKIRT
- VENTING
- WRIST GAITERS
- CRITICAL SEAM SEALING

FABRIC & INSULATION:

10K / 10K

- DENIM TWILL - HERRINGBONE - NYLON
- 60/40 POLYFILL

COLORWAYS:



• MERLOT



• NAVY

SIZE: S • M • L • XL



N54402007

TEGAN

WOMENS JACKET



FEATURES:

- MEDIA & GOGGLE POCKETS
- PASS POCKET SLEEVE
- FIXED SNOW SKIRT
- VENTING
- WRIST GAITERS
- TAFFETA LINING
- CRITICAL SEAM SEALING

FABRIC & INSULATION:

8K / 8K

- 10K/10K COATING
- 100% POLYESTER HERRINGBONE
- POLYFILL 60/40

COLORWAYS:



• AZTEC



• BURNT

SIZE: ST • MT • LT • XLT



N54402010

STACY

WOMENS JACKET



FEATURES:

- MEDIA POCKET
- GOGGLE POCKET
- PASS POCKET SLEEVE
- FIXED SNOW SKIRT
- VENTING
- CRITICAL SEAM SEALING

FABRIC & INSULATION:

10K / 10K

- 10K/10K COATING
- DOBBY
- POLYFILL 60/40

COLORWAYS:



• SURPLUS



• MERLOT



• BLACK

SIZE: S • M • L • XL



N54402011

ANTHRAX

WOMENS JACKET



FEATURES:

- MEDIA POCKET
- GOGGLE POCKET
- PASS POCKET SLEEVE
- VENTING
- CRITICAL SEAM SEALING

FABRIC & INSULATION:

10K / 10K

- 10K/10K COATING
- 100% NYLON DOBBY
- SHELL

COLORWAYS:



• FIRE

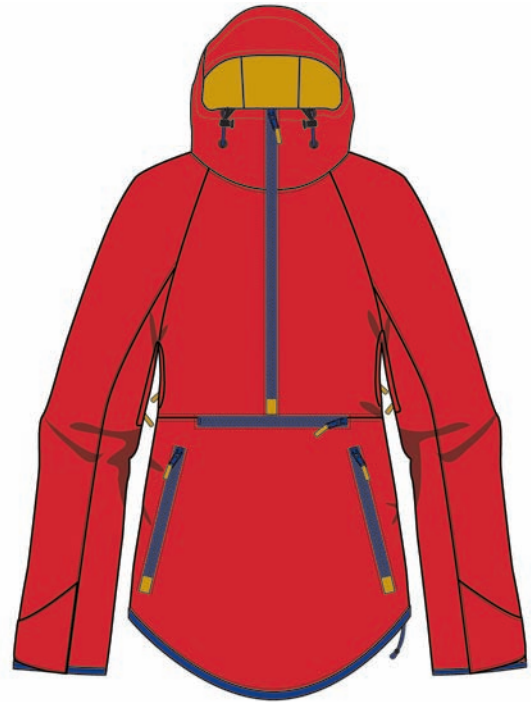


• BLUFOG



• EVERGREEN

SIZE: ST • MT • LT • XLT



N54402012

SHIELD

WOMENS JACKET



FEATURES:

- MEDIA POCKET
- HAND POCKETS
- MESH LINING

FABRIC & INSULATION:

5K / 5K

- W/R+5K/5K COATING
- POLY TAFFETA
- DWR

COLORWAYS:



• BLACK



• ROYAL

SIZE: S • M • L • XL



N54402013

STORY

WOMENS JACKET



FEATURES:

- INTERIOR POCKET

FABRIC & INSULATION:

5K / 5K

- 24HR WATERPROOF/BREATHABLE FABRIC WITH DWR
- FLANNEL & BIG WAVE FABRICS
- SHELL

COLORWAYS:

SIZE: ST • MT • LT • XLT



• BLACK



• BURNT



N54102016W

HONCHO

UNISEX PONCHO



FEATURES:

FABRIC & INSULATION:

- BIG WEAVE PONCHO PATTERN

COLORWAYS:

SIZE: S • M • L • XL



• MULTI



N54402016

PACKED

WOMENS INSULATOR



FEATURES:

- INTERIOR POCKETS
- TAFFETA LINING

FABRIC & INSULATION:

5K / 5K

- W/R + 5K/5K CLEAR COATING
- DWR
- POLYFILL 60/40

COLORWAYS:

SIZE: S • M • L • XL



• FIRE



• BLACK



• GOLDEN



N54402018

VESSEL

WOMENS VEST



FEATURES:

- INTERIOR POCKET

FABRIC & INSULATION:

10K / 10K

- POLY TAFFETA WITH DWR
- POLYFILL 100

COLORWAYS:

SIZE: ST • MT • LT • XLT



• CAMO



• MERLOT



N54402009

COMMANDER

WOMENS JACKET



FEATURES:

- MEDIA & GOGGLE POCKETS
- INTERIOR POCKET
- VENTING
- TAFFETA LINING

FABRIC & INSULATION:

10K / 10K

- 10K/10K COATING
- 100% POLYESTER HERRINGBONE
- POLYFILL 80/60 INSULATION

COLORWAYS:



• MERLOT



• BLACK

SIZE: ST • MT • LT • XLT



N54409004

JEAN PANT

WOMENS PANTS



FEATURES:

- MEDIA POCKET
- HANDWARMER POCKETS
- BOOT GAITERS
- VENTING
- CRITICAL SEAM SEALING

FABRIC & INSULATION:

10K / 10K

- 10K/10K COATING
- DENIM TWILL
- SHELL - INSULATED OPTION OFFERED

COLORWAYS:



• NAVY



• BURNT



• CAMO



• BLACK

SIZE: S • M • L • XL



N54409005

ZOEY PANT

WOMENS PANTS



FEATURES:

- MEDIA POCKET
- HANDWARMER POCKETS
- BOOT GAITERS
- VENTING
- CRITICAL SEAM SEALING

FABRIC & INSULATION:

10K / 10K

- 10K/10K COATING
- HERRINGBONE - DOBBY
- POLYFILL 40

COLORWAYS:

SIZE: S • M • L • XL



• AZTEC



• MERLOT



• GOLDEN



• SPACE DYE



• ROYAL



• CAMO



N54409002

TWIGGY PANT

WOMENS PANTS



FEATURES:

- HANDWARMER POCKETS
- CRITICAL SEAM SEALING

FABRIC & INSULATION:

10K / 10K

- DWR
- SOFTSHELL

COLORWAYS:

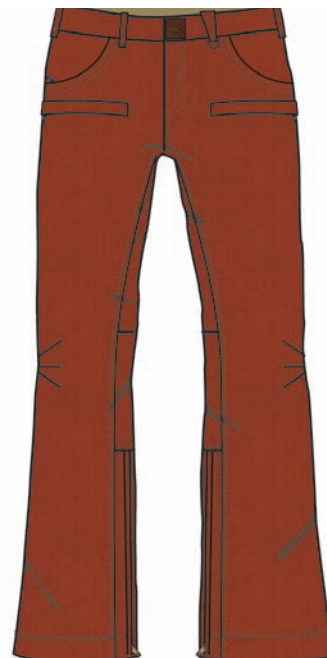
SIZE: S • M • L • XL



• BURNT



• BLACK



14

-

15

EST 2000

WOMENS
STREETWEAR

FALL - WINTER

WOAH SHIRT



N34418000
ICON
WOMENS T-SHIRT



FABRIC:

• 100% COMBED COTTON 160GSM JERSEY

COLORWAYS:

SIZE: ST • MT • LT • XLT



• WHITE



• SURPLUS



• BLACK



N34418002
ALL OVER
WOMENS T-SHIRT



FABRIC:

• 100% COMBED COTTON 160GSM JERSEY

COLORWAYS:

SIZE: ST • MT • LT • XLT



• WHITE



• NAVY



N34419000

BBALL

WOMENS RAGLAN



FABRIC:

• 100% COMBED COTTON 160GSM JERSEY

COLORWAYS:

SIZE: S • M • L • XL



• BLACK



• WHITE



• NAVY



N34419001

HARD & FAST LS

WOMENS LONG SLEEVE T-SHIRT



FABRIC:

• 100% COMBED COTTON 160GSM JERSEY

COLORWAYS:

SIZE: S • M • L • XL



• FIRE



• STORM



• BLACK



N34410001
HARD & FAST
WOMENS CREW



FABRIC:

- 100% COMBED COTTON
- 160 GSM JERSEY

COLORWAYS:

SIZE: ST • MT • LT • XLT



• STORM



• BLACK



• MERLOT



N34410002
DOLMAN
WOMENS HOODY



FABRIC:

- 100% COTTON/POLY
- 400 GSM FLEECE

COLORWAYS:

SIZE: ST • MT • LT • XLT



• SURPLUS



• BLACK



• BURNT



N34410003
BOYFRIEND
WOMENS HOODY



FABRIC:

- 80/20 COTTON/POLY
- 400 GSM FRENCH TERRY

COLORWAYS:

SIZE: ST • MT • LT • XLT



• BURNT



• STORM



• BLACK



N34410004
DOUBLE TROUBLE
WOMENS HOODY



FABRIC:

- 80/20 COTTON/POLY

COLORWAYS:

SIZE: S • M • L • XL



• AZTEC



• STORM



• CAMO



N34410005
RADICAL
WOMENS ZIP HOODY



FABRIC:

- 80/20 COTTON/POLY
- 400 GSM FRENCH TERRY

COLORWAYS:



• CAMO



• SURPLUS



• BLACK

SIZE: S • M • L • XL



N34410006
STACY
WOMENS ZIP HOODY



FABRIC:

- 80/20 COTTON/POLY
- 400 GSM FRENCH TERRY

COLORWAYS:



• MERLOT



• BLACK



• FIRE

SIZE: S • M • L • XL



N34410008
WOODLAND
WOMENS ZIP HOODY



FABRIC:

- 100% COTTON-POLY 400 GSM JERSEY
- QUILTING POLYFILL

COLORWAYS:

SIZE: ST • MT • LT • XLT



• BLACK



• CAMO



N34404000
WOAH
WOMENS SHIRT



FABRIC:

- 100% COTTON CHAMBRAY

COLORWAYS:

SIZE: S • M • L • XL



• NAVY



• BURNT



14

-

15



LABEL CAP



N54199000

AMAZING FACEMASK

UNISEX FACEMASK

FABRIC:

• 100% ACRYLIC

COLORWAYS:

SIZE: OS



• FIRE



• MERLOT



• SURPLUS



N14193000

COME AGAIN

UNISEX BEANIE

FEATURES:

FABRIC:

• 100% ACRYLIC

COLORWAYS:

SIZE: OS



• SURPLUS



• FIRE



N54193001
POMPOM
UNISEX BEANIE

FABRIC:

- 100% ACRYLIC

COLORWAYS:

SIZE: OS



• WHITE



• MERLOT



• BURNT



N34196000
AMAZING SNAPBACK
UNISEX CAP

FABRIC:

- 100% COTTON TWILL

COLORWAYS:

SIZE: OS



• MERLOT



• FIRE



• SURPLUS



N34196001

LABEL

5 PANEL CAP

FABRIC:

- 100% COTTON CANVAS

COLORWAYS:

SIZE: OS



• NAVY



• BLACK



• SURPLUS



N14196002

4 SEASONS

UNISEX CAP

FABRIC:

- 100% POLY RIPSTOP

COLORWAYS:

SIZE: OS



• EVERGREEN



• MERLOT



N54199001
TOILE
UNISEX FACEMASK

FABRIC:

• 100% POLYESTER SOFTSHELL

COLORWAYS:



• WHITE

SIZE: OS



N54199002
BEAVER
UNISEX BANDANA

FABRIC:

• 100% SPANDEX

COLORWAYS:



• BLACK

SIZE: OS



CONTACT

ADMINISTRATION & CUSTOMER SERVICE

MARY MASSARI
1-514-789-0809 EXT. 426
MARY@NOMIS-STREETWEAR.COM

ELIZABETH FRAVICA
1-514-789-0809 EXT. 233
ELIZABETH@NOMIS-STREETWEAR.COM

SHAI SHOTTS
1-514-789-0809 EXT. 276
SHAI@NOMIS-STREETWEAR.COM

MARKETING

FRANCIS OUELLET
P 1.514.789.0809 EXT. 271
FRENCHFRANK@NOMIS-STREETWEAR.COM

HEAD OFFICES

8505 CH. DEVONSHIRE
MONTREAL, QC
CANADA, H4P 2L3
1-514-789-0809

NOMISDESIGN.COM
FACEBOOK.COM/NOMISCLOTHING

DELIVERY DATES

EARLY DELIVERY

SPORTSWEAR: JULY 15TH

NOMIS REP LIST

CANADA

B-C

JAY WOON
403-993-6599
JAY@
WESTERNFRONTSALES.COM

ERIN WOON
403-875-4398
ERIN@
WESTERNFRONTSALES.COM

PRAIRIES

JAY WOON
403-993-6599
JAY@
WESTERNFRONTSALES.COM

ERIN WOON
403-875-4398
ERIN@
WESTERNFRONTSALES.COM

QUEBEC

MIKE BOILY
418-812-6182
MIKE@
AGENCEHONESTA.COM

MARITIMES

ROB STRANGE
902-820-2430
R.STRANGE@
BELLALIAN.NET

PAT BOISSONNAULT
506-987-0380
BOISSONNAULT.S.S.L@
GMAIL.COM

UNITED STATES

ROCKIES

DEIDRE OAKLEY
303-517-0157
DOAKLEYMBS@
MSN.COM C

NEW ENGLAND

ARVID SWANSON
603-630-3042
ASWANSON2@
MYFAIRPOINT.NET

MID-WEST

SHANNON TURNER
614-530-6054
RIDETHEFLOW@
HOTMAIL.COM

SALES INQUIRIES

NATE AXLINE
C.805.757.7927 | F.805.740.1210
NATE@
NOMIS-STREETWEAR.COM





THANK YOU



**FALL
WINTER**
14-15